

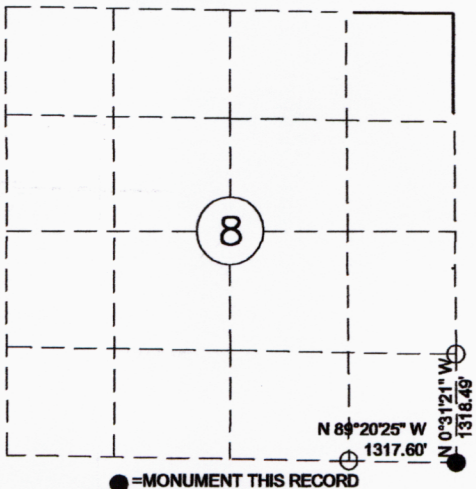
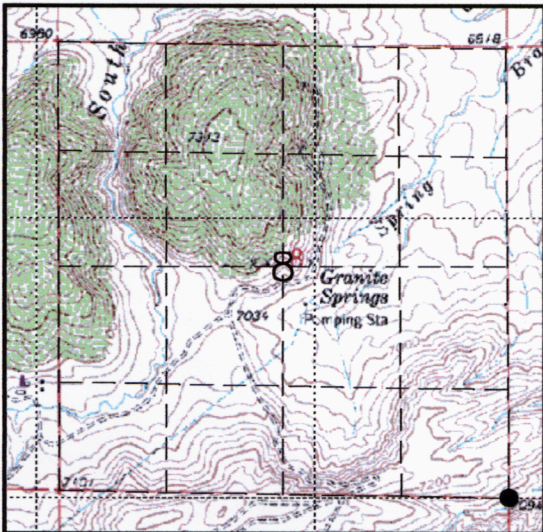
State of Wyoming Corner Record

(In compliance with the CORNER PERPETUATION AND FILING ACT, Wyoming Statutes, 1997 Section 33-29-140 et. seq., and the Rules and Regulations of the Board of Professional Engineers and Professional Land Surveyors)

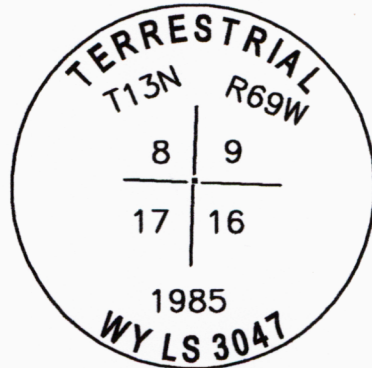
Reverse side of this form may be used if more space is needed.

Record of original survey and citation of source of historical information (if corner is lost or obliterated). Description of corner monumentation evidence found and/or monument and accessories established to perpetuate the location of this corner. Sketch of relative location of monument, accessories, and reference points with course and distance to adjacent corner(s) (if determined in this survey). Method and rationale for reestablishment of lost or obliterated corner.

RECORD: Granite Boulder 30"x8"x6" - No Marks noted
 FOUND: 2" Aluminum cap inscribed as shown below
 SET: No additional monumentation



Monument Location



Monument Inscription

Date of Field Work: 4-15-03

Office Reference: AMARMA0301.00

Cross Index Plat

Firm/Agency, Address

This corner record was prepared by me or under my direction and supervision.

1	2	3	4	5	6	7	8	9	10	11	12	13	14	15	16	17	18	19	20	21	22	23	24	25	
A																									A
B																									B
C	6	5	4	3	2	1																			C
D																									D
E																									E
F																									F
G	7	8	9	10	11	12																			G
H																									H
J																									J
K																									K
L	18	17	16	15	14	13																			L
M																									M
N																									N
O																									O
P	19	20	21	22	23	24																			P
Q																									Q
R																									R
S																									S
T	30	29	28	27	26	25																			T
U																									U
V																									V
W																									W
X	31	32	33	34	35	36																			X
Y																									Y
Z																									Z
1	2	3	4	5	6	7	8	9	10	11	12	13	14	15	16	17	18	19	20	21	22	23	24	25	

SEH Inc.
7000 Yellowtail Rd
Cheyenne, WY 82001

Telephone Number: 307-633-6440

SEAL & SIGNATURE



Corner Name SE Corner Section 8, T 13 N, R 69 W, 6th P.M. Cross-Index No.: J-9
 County: Laramie Wyoming

SBRPEPLS/PLSW: March 1994; PLSW January 1998